



Storm Water Design

Bruce Murray, Owner
Boundary Breaks Vineyard

August, 2015

Lodi Point State Park

Home of Bruce Murray &
Diana Lyttle

Boundary Breaks Vineyard





March, 2017



November, 2015

Officials: Around 65 rescued from flooding near Lodi Point; State of Emergency in effect

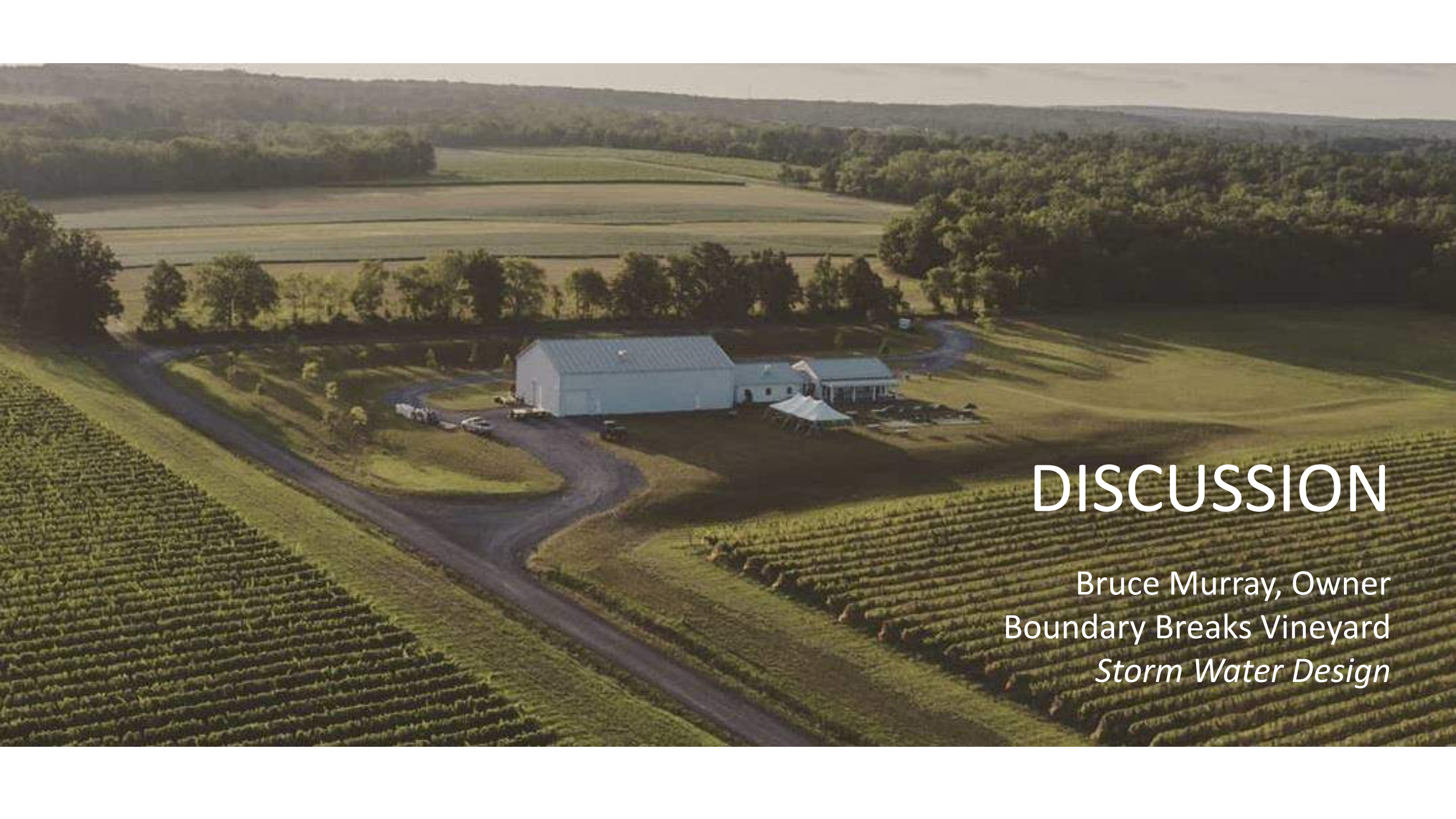
by CNYCentral | Tuesday, August 14th 2018

AA





Bio-retention Basin
following storm



DISCUSSION

Bruce Murray, Owner
Boundary Breaks Vineyard
Storm Water Design